

# FOR LEASE

# 65000

W. ROGERS CIRCLE  
BOCA RATON, FL

## TERRA PLAZA

**Suite 5000 - 5,203 SF**  
**Suite 7000 - 5,400 SF**



### PROPERTY HIGHLIGHTS

- Ideal showroom space, offices, light manufacturing or storage.
- Shared Covered Dock-High loading dock
- Assigned parking
- \$25.00 PSF Modified Gross
- Ramp to access the loading area.
- Ceiling height: 24'-6" clear
- 3-Phase Electric
- Management on site.

For additional information contact:

**Charlie Exelbirt**

**954 - 309-7151**

[charlie@mattisadvisors.com](mailto:charlie@mattisadvisors.com)

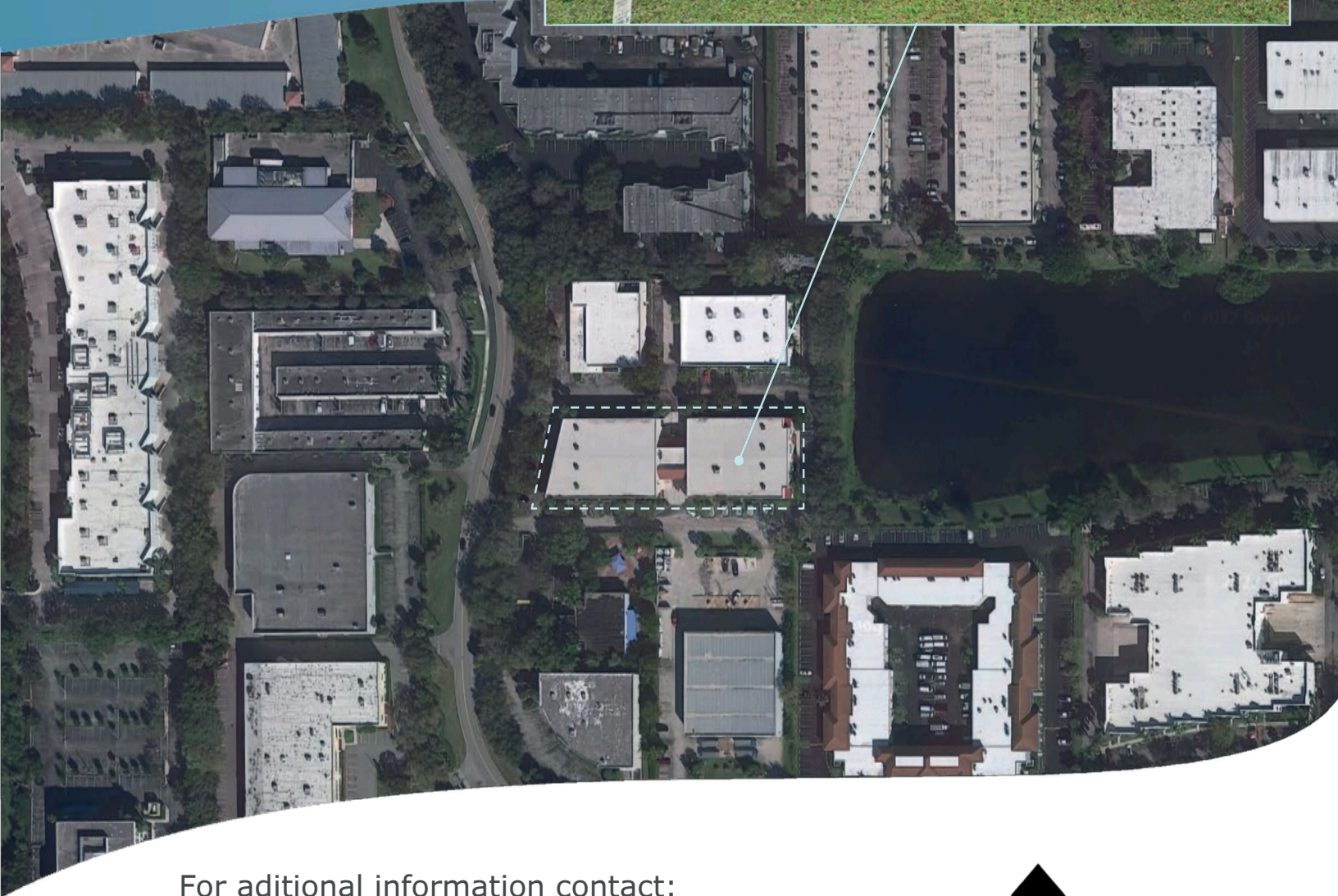


Any information herewith is obtained from sources we consider reliable. However, we are not responsible for misstatement of facts, errors, omissions, prior sale, and withdrawal from market modification of mortgage commitment, terms and conditions or change in price without prior notice. The information supplied herein is for informational purposes only and shall not constitute a warranty of assurance that said information is correct. Any person intending to rely upon the information supplied herein should verify said information independently.

**MATTIS ADVISORS, INC.**  
Commercial Real Estate Brokers  
1181 S. Rogers Circle, Suite 20  
[mattisadvisors.com](http://mattisadvisors.com)

# 6500

W. ROGERS CIRCLE  
BOCA RATON, FL



For additional information contact:  
**Charlie Exelbirt**  
954-309-7151  
[charlie@mattisadvisors.com](mailto:charlie@mattisadvisors.com)

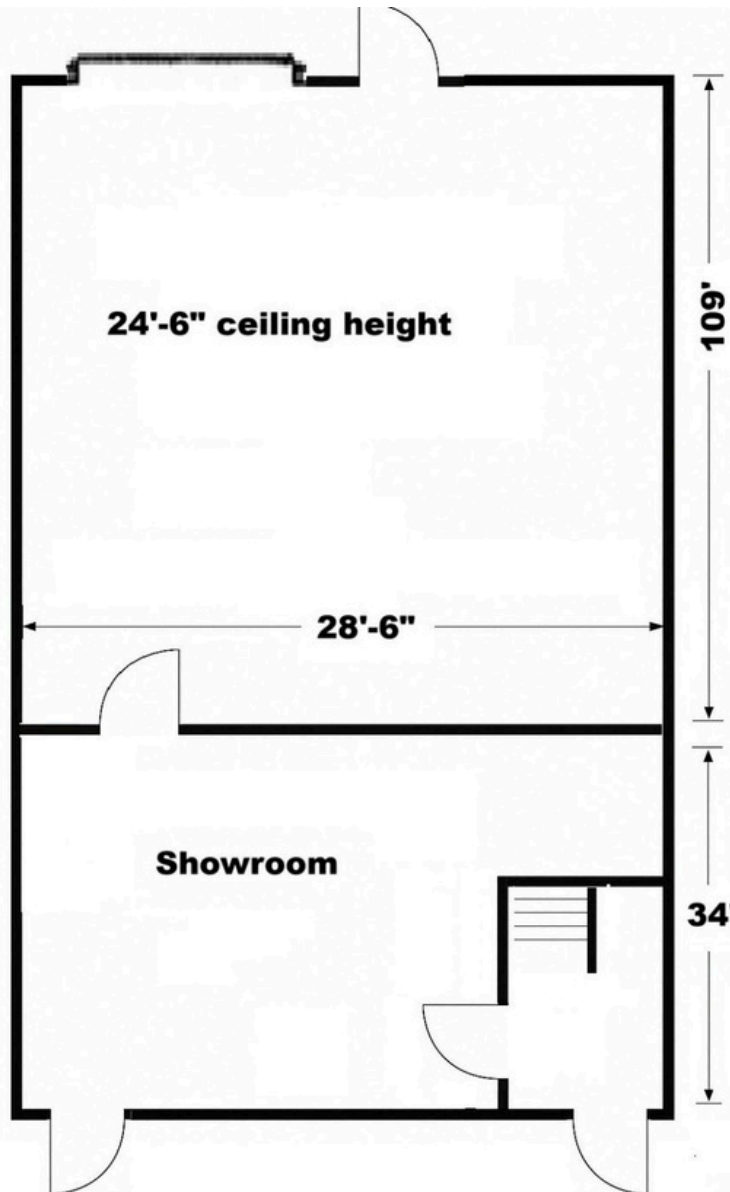


Any information herewith is obtained from sources we consider reliable. However, we are not responsible for misstatement of facts, errors, omissions, prior sale, and withdrawal from market modification of mortgage commitment, terms and conditions or change in price without prior notice. The information supplied herein is for informational purposes only and shall not constitute a warranty of assurance that said information is correct. Any person intending to rely upon the information supplied herein should verify said information independently.

**MATTIS ADVISORS, INC.**  
Commercial Real Estate Brokers  
1181 S. Rogers Circle, Suite 20  
[mattisadvisors.com](http://mattisadvisors.com)



## CONCEPTUAL FLOOR PLAN



Suite 7000  
First floor  
969sf showroom  
3157 sf warehouse

For additional information contact:

**Charlie Exelbirt**

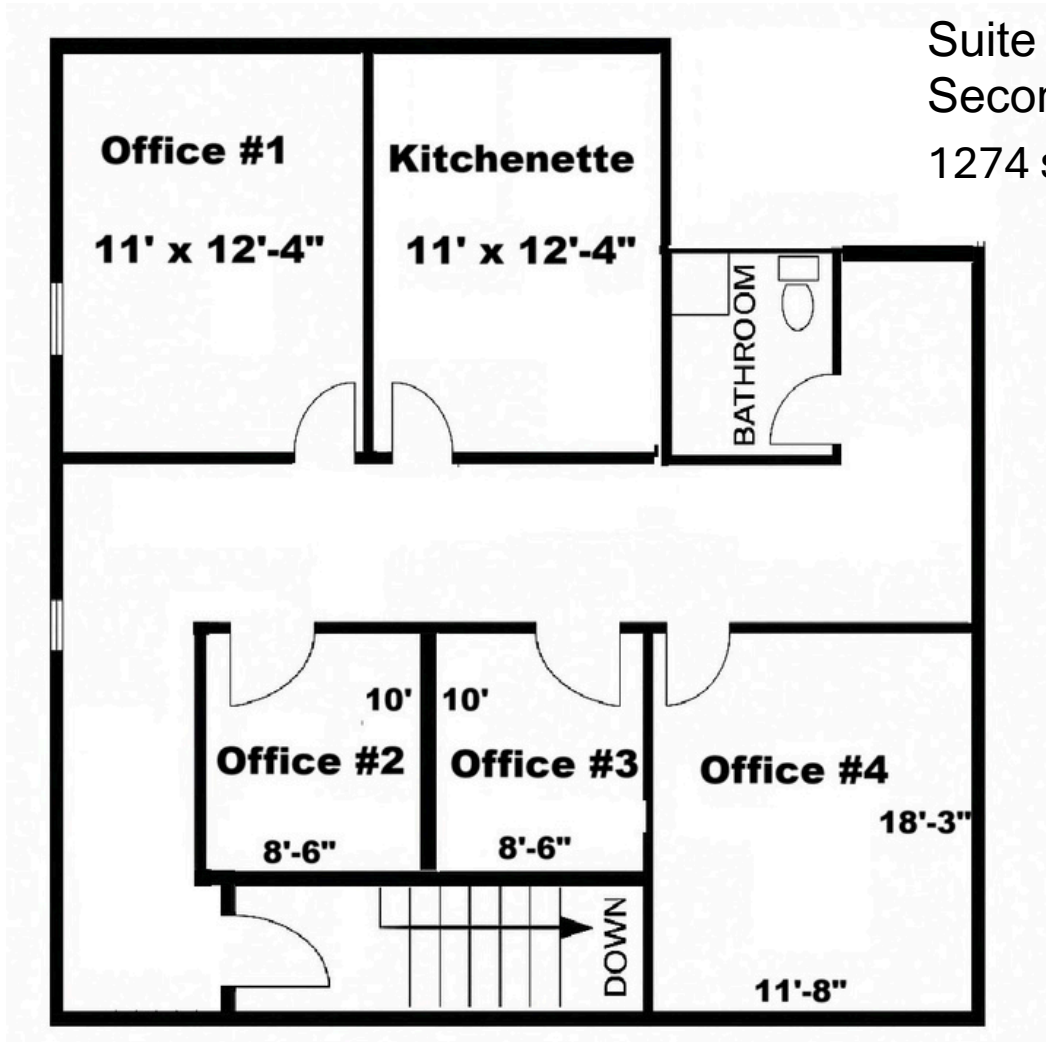
**954 - 309-7151**

[charlie@mattisadvisors.com](mailto:charlie@mattisadvisors.com)





**CONCEPTUAL FLOOR PLAN**



Suite 7000  
Second floor  
1274 sf office

For additional information contact:

**Charlie Exelbirt**

954-309-7151

[charlie@mattisadvisors.com](mailto:charlie@mattisadvisors.com)

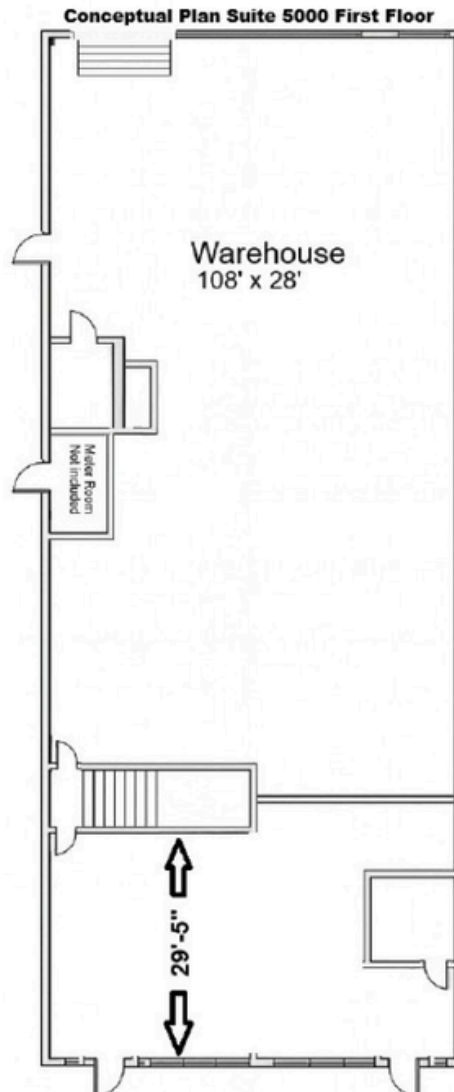


**FOR LEASE**  
**TERRA PLAZA**

**6500 W. ROGERS CIRCLE**  
**BOCA RATON, FL**



## CONCEPTUAL FLOOR PLAN



**Suite 5000**  
**First floor**

For additional information contact:

**Charlie Exelbirt**

**954 - 309-7151**

[charlie@mattisadvisors.com](mailto:charlie@mattisadvisors.com)



Any information herewith is obtained from sources we consider reliable. However, we are not responsible for misstatement of facts, errors, omissions, prior sale, and withdrawal from market modification of mortgage commitment, terms and conditions or change in price without prior notice. The information supplied herein is for informational purposes only and shall not constitute a warranty of assurance that said information is correct. Any person intending to rely upon the information supplied herein should verify said information independently.

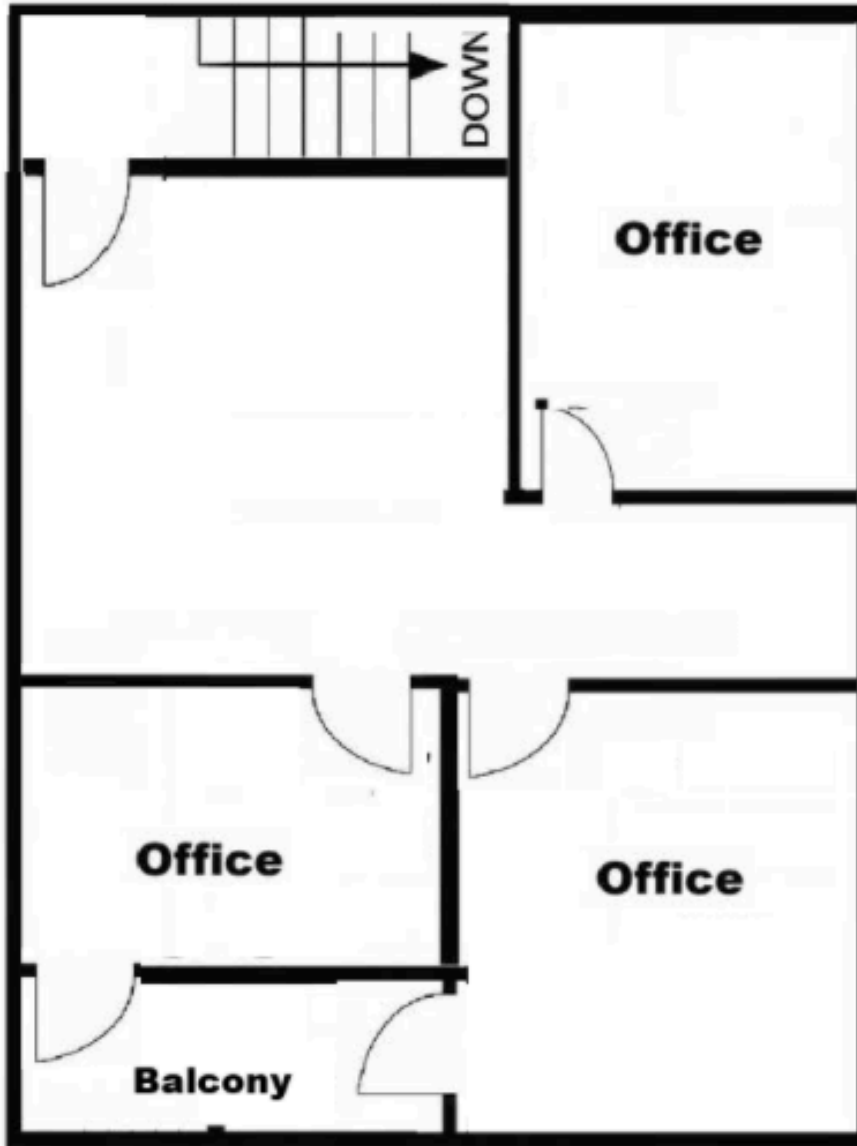
**MATTIS ADVISORS, INC.**  
Commercial Real Estate Brokers  
1181 S. Rogers Circle, Suite 20  
[mattisadvisors.com](http://mattisadvisors.com)

**FOR LEASE**  
**TERRA PLAZA**

**6500 W. ROGERS CIRCLE**  
**BOCA RATON, FL**



## CONCEPTUAL FLOOR PLAN



**Suite 5000**  
**Second floor**

For additional information contact:

**Charlie Exelbirt**

**954 - 309-7151**

[charlie@mattisadvisors.com](mailto:charlie@mattisadvisors.com)



Any information herewith is obtained from sources we consider reliable. However, we are not responsible for misstatement of facts, errors, omissions, prior sale, and withdrawal from market modification of mortgage commitment, terms and conditions or change in price without prior notice. The information supplied herein is for informational purposes only and shall not constitute a warranty of assurance that said information is correct. Any person intending to rely upon the information supplied herein should verify said information independently.

**MATTIS ADVISORS, INC.**  
**Commercial Real Estate Brokers**  
1181 S. Rogers Circle, Suite 20  
[mattisadvisors.com](http://mattisadvisors.com)