

FOR SALE

1999

NW 16TH STREET
POMPANO BEACH, FL



Situated on 0.39 acres located on a dead-end road for privacy. The property consists of a secure yard, office space, and enclosed garage. There is a large covered concrete driveway offering further room for equipment and work area. The property is zoned I-1 (General Industrial) allowing for a wide range of acceptable uses. Ideal for trucking, automotive, boat, repair shop, heavy equipment, manufacturing, and various other industrial uses.



PROPERTY DETAILS

- Pricing: \$1,350,000
- Property Type: Land
- Min/Max SF: 1,699 sf
- Property Size: .39 Acres (17,066 SF)
- Folio No.: 4842 27 22 0050
- Sale/Lease: Sale

For additional information contact:

Charlie Exelbirt
954-309-7151
charlie@mattisadvisors.com

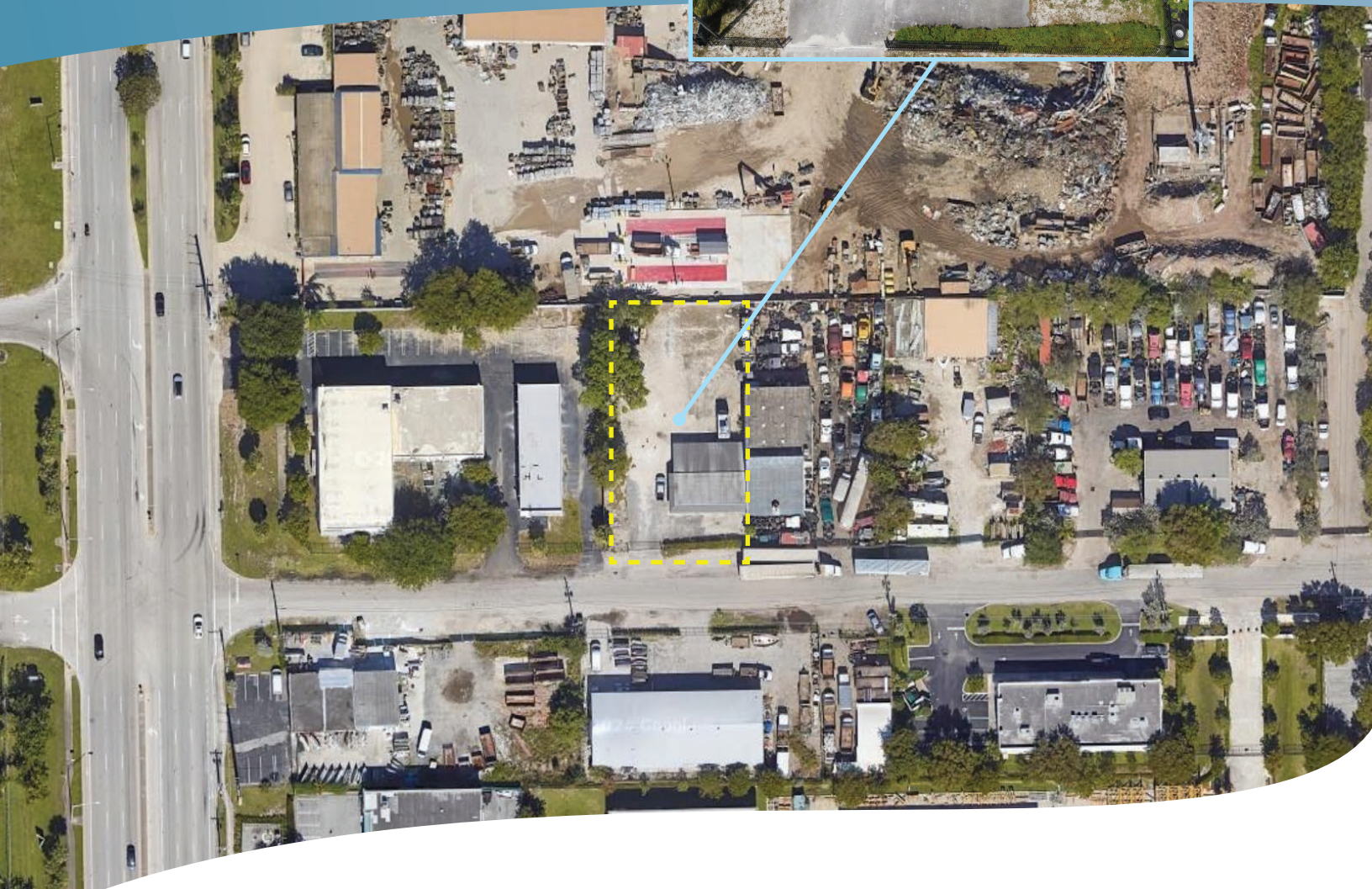
Justin Crow
954-599-1555
justin@mattisadvisors.com



Any information herewith is obtained from sources we consider reliable. However, we are not responsible for misstatement of facts, errors, omissions, prior sale, and withdrawal from market modification of mortgage commitment, terms and conditions or change in price without prior notice. The information supplied herein is for informational purposes only and shall not constitute a warranty of assurance that said information is correct. Any person intending to rely upon the information supplied herein should verify said information independently.

MATTIS ADVISORS, INC.
Commercial Real Estate Brokers
1181 S. Rogers Circle, Suite 20
mattisadvisors.com

1999 NW 16TH STREET POMPANO BEACH, FL



For additional information contact:

Charlie Exelbirt
954-309-7151
charlie@mattisadvisors.com

Justin Crow
954-599-1555
justin@mattisadvisors.com



Any information herewith is obtained from sources we consider reliable. However, we are not responsible for misstatement of facts, errors, omissions, prior sale, and withdrawal from market modification of mortgage commitment, terms and conditions or change in price without prior notice. The information supplied herein is for informational purposes only and shall not constitute a warranty of assurance that said information is correct. Any person intending to rely upon the information supplied herein should verify said information independently.

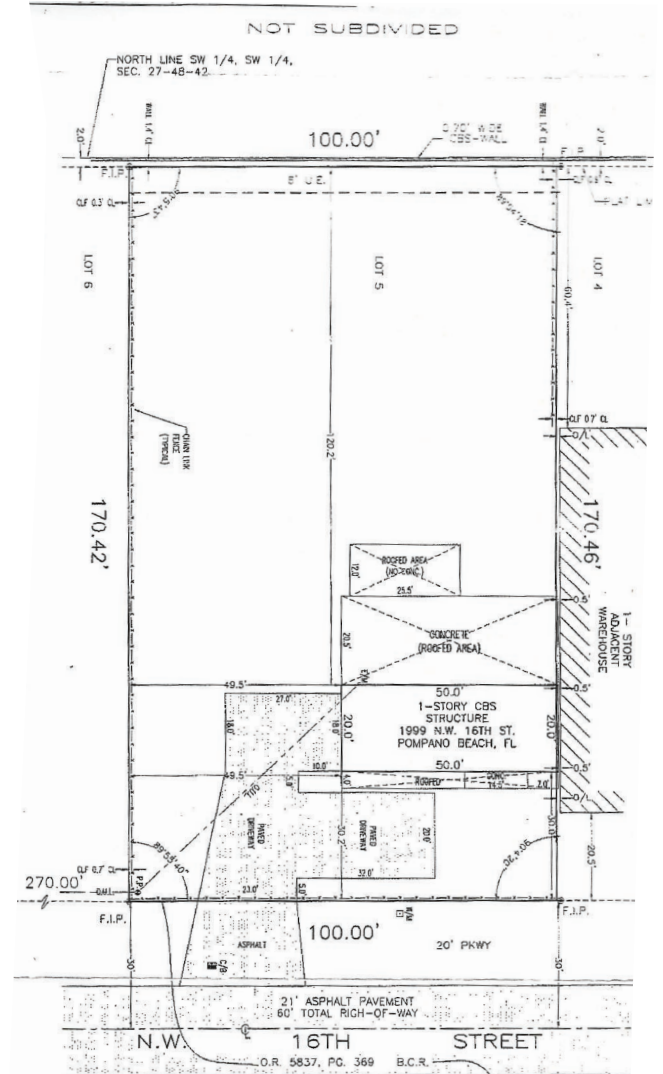
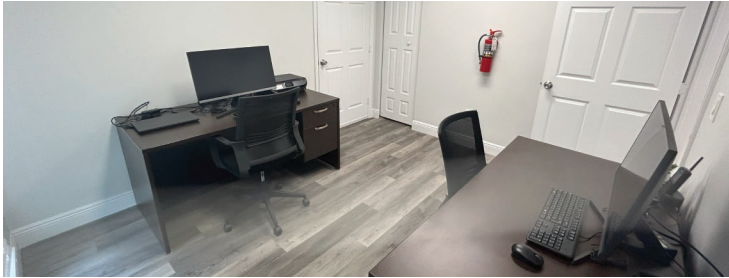
MATTIS ADVISORS, INC.
Commercial Real Estate Brokers
1181 S. Rogers Circle, Suite 20
mattisadvisors.com

FOR SALE
LAND

1999 NW 16TH STREET
POMPANO BEACH, FL



FLOOR PLAN OUTLAY AND SURVEY



For additional information contact:

Charlie Exelbirt
954-309-7151
charlie@mattisadvisors.com

Justin Crow
954-599-1555
justin@mattisadvisors.com



Any information herewith is obtained from sources we consider reliable. However, we are not responsible for misstatement of facts, errors, omissions, prior sale, and withdrawal from market modification of mortgage commitment, terms and conditions or change in price without prior notice. The information supplied herein is for informational purposes only and shall not constitute a warranty of assurance that said information is correct. Any person intending to rely upon the information supplied herein should verify said information independently.

MATTIS ADVISORS, INC.
Commercial Real Estate Brokers
1181 S. Rogers Circle, Suite 20
mattisadvisors.com