

FOR SALE



121
COMMERCE ROAD
BOYNTON BEACH, FL

MICRO FULFILLMENT CENTER - 15,240 SF - \$5,999,999.00

2200 SF Office | 13,040 Warehouse



PROPERTY HIGHLIGHTS

- Located In Major Business Corridor of Palm Beach County
- 15,240 SF | 2200 SF High End Office Space
- Conference Room | Kitchen | 5 Offices
- 2 Overhead doors | 22 Ft Ceilings
- Fenced Lot | Security System & Cameras
- New Roof | Sealed Parking Lot | Tractor Trailer Access
- 1.10 Acres | Ample Parking | Owner Financing
- \$5,999,999.00

For additional information contact:

Charlie Exelbirt

954-309-7151

charlie@mattisadvisors.com

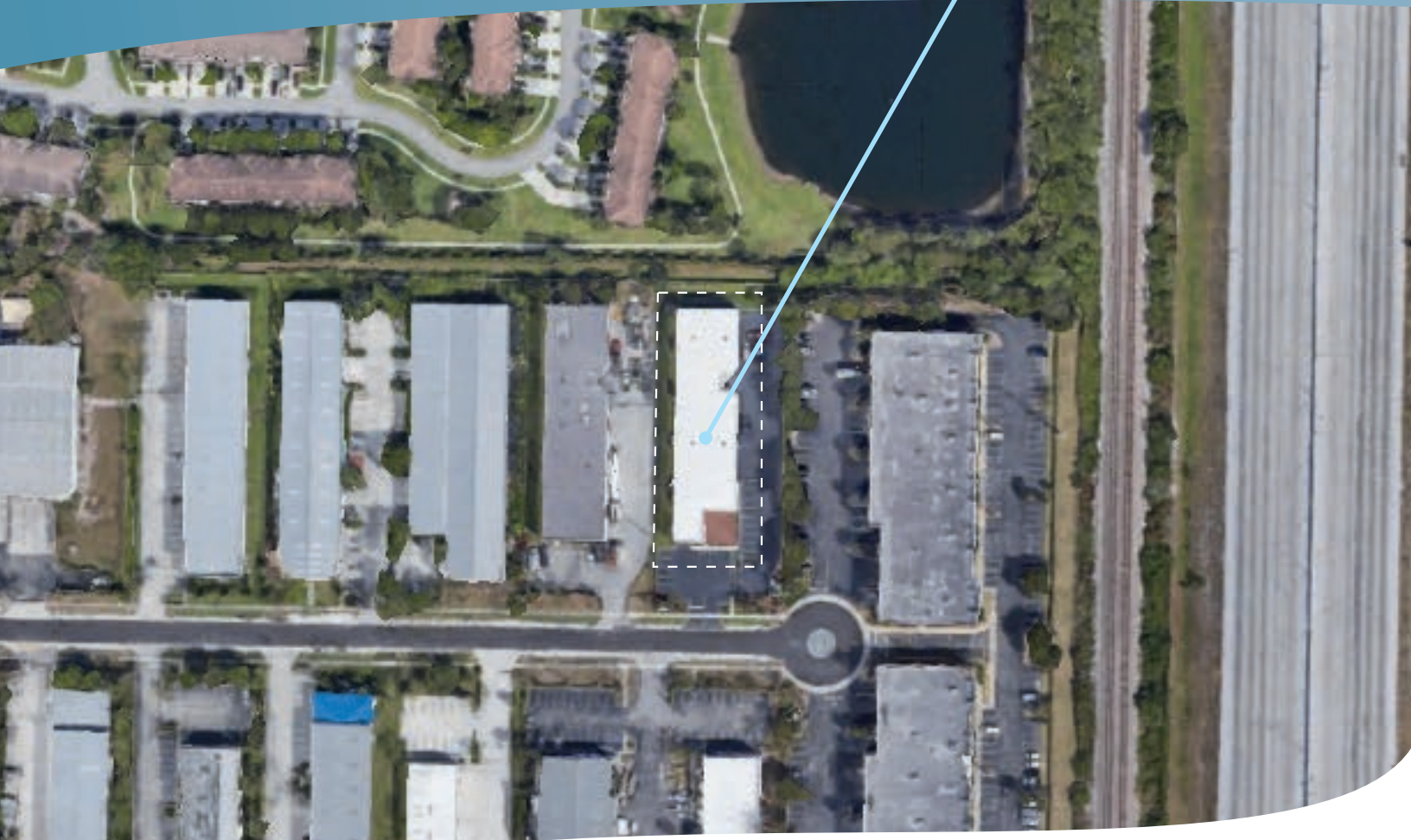


Any information herewith is obtained from sources we consider reliable. However, we are not responsible for misstatement of facts, errors, omissions, prior sale, and withdrawal from market modification of mortgage commitment, terms and conditions or change in price without prior notice. The information supplied herein is for informational purposes only and shall not constitute a warranty of assurance that said information is correct. Any person intending to rely upon the information supplied herein should verify said information independently.

MATTIS ADVISORS, INC.

Commercial Real Estate Brokers
1181 S. Rogers Circle, Suite 20
mattisadvisors.com

**COMMERCE ROAD
BOYNTON BEACH, FL**



For additional information contact:

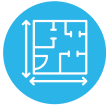
Charlie Exelbirt
954-309-7151

charlie@mattisadvisors.com

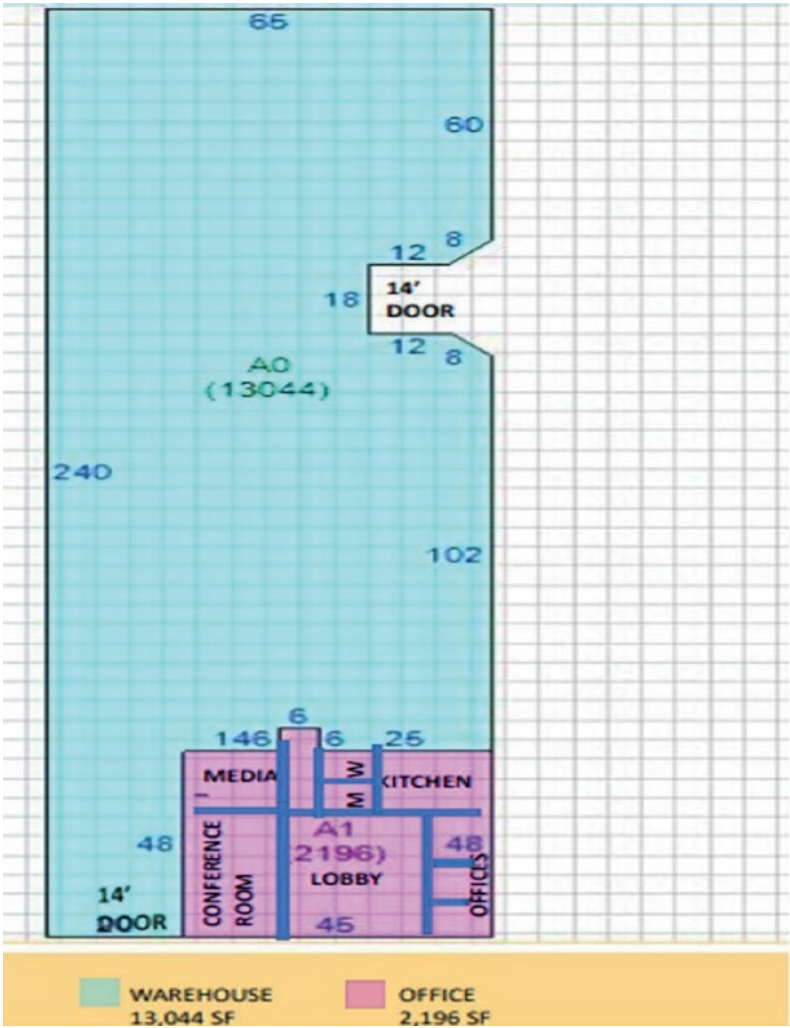


Any information herewith is obtained from sources we consider reliable. However, we are not responsible for misstatement of facts, errors, omissions, prior sale, and withdrawal from market modification of mortgage commitment, terms and conditions or change in price without prior notice. The information supplied herein is for informational purposes only and shall not constitute a warranty of assurance that said information is correct. Any person intending to rely upon the information supplied herein should verify said information independently.

MATTIS ADVISORS, INC.
Commercial Real Estate Brokers
1181 S. Rogers Circle, Suite 20
mattisadvisors.com



CONCEPTUAL FLOOR PLAN



For additional information contact:

Charlie Exelbirt
954-309-7151
charlie@mattisadvisors.com



Any information herewith is obtained from sources we consider reliable. However, we are not responsible for misstatement of facts, errors, omissions, prior sale, and withdrawal from market modification of mortgage commitment, terms and conditions or change in price without prior notice. The information supplied herein is for informational purposes only and shall not constitute a warranty of assurance that said information is correct. Any person intending to rely upon the information supplied herein should verify said information independently.

MATTIS ADVISORS, INC.
Commercial Real Estate Brokers
1181 S. Rogers Circle, Suite 20
mattisadvisors.com

FOR SALE
MICRO FULFILLMENT CENTER

COMMERCE ROAD
BOYNTON BEACH, FL



PROPERTY PHOTOS



For additional information contact:

Charlie Exelbirt
954-309-7151

charlie@mattisadvisors.com



Any information herewith is obtained from sources we consider reliable. However, we are not responsible for misstatement of facts, errors, omissions, prior sale, and withdrawal from market modification of mortgage commitment, terms and conditions or change in price without prior notice. The information supplied herein is for informational purposes only and shall not constitute a warranty of assurance that said information is correct. Any person intending to rely upon the information supplied herein should verify said information independently.

MATTIS ADVISORS, INC.
Commercial Real Estate Brokers
1181 S. Rogers Circle, Suite 20
mattisadvisors.com