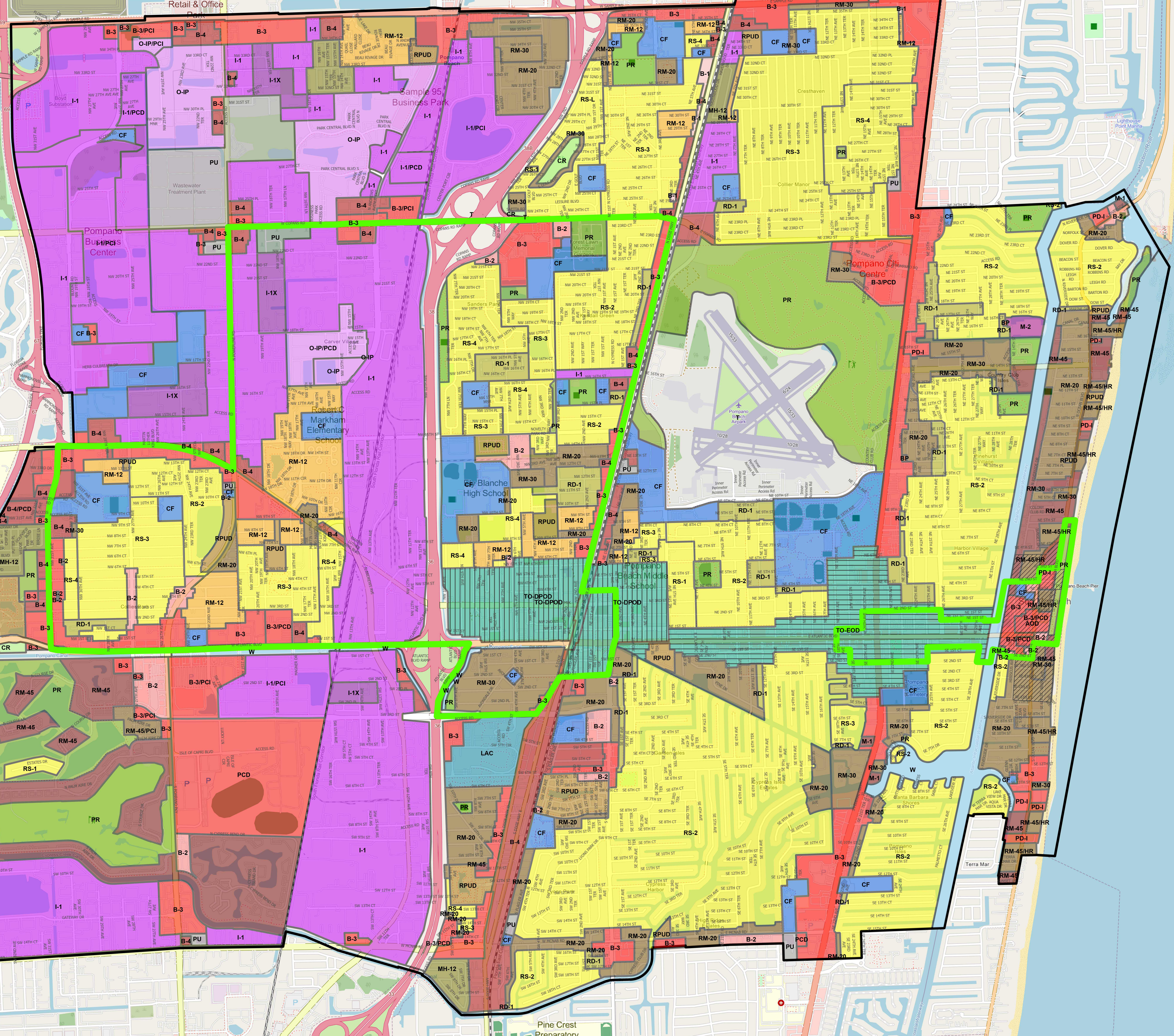


Legend

- Community Redevelopment Areas
- East Atlantic Overlay District
- Atlantic Blvd Overlay District
- Downtown Pompano Beach Overlay District
- Zoning Districts**
- RESIDENTIAL ZONING DISTRICTS**
- RS-1 - SINGLE-FAMILY RESIDENCE
- RS-2 - SINGLE-FAMILY RESIDENCE
- RS-3 - SINGLE-FAMILY RESIDENCE
- RS-4 - SINGLE-FAMILY RESIDENCE
- RS-L - SPECIAL SINGLE-FAMILY RESIDENCE
- RD-1 - TWO-FAMILY RESIDENCE
- RM-7 - MULTIPLE-FAMILY RESIDENCE
- RM-12 - MULTIPLE-FAMILY RESIDENCE
- RM-20 - MULTIPLE-FAMILY RESIDENCE
- RM-30 - MULTIPLE-FAMILY RESIDENCE
- RM-45 - MULTIPLE-FAMILY RESIDENCE
- MH-12 - MOBILE HOME PARK
- COMMERCIAL ZONING DISTRICTS**
- B-1 - LIMITED BUSINESS
- B-2 - COMMUNITY BUSINESS
- B-3 - GENERAL BUSINESS
- B-3/PCD - GENERAL BUSINESS PLANNED COMMERCIAL OVERLAY
- PCD - PLANNED COMMERCIAL/INDUSTRIAL DISTRICT
- B-3/PCI - GENERAL BUSINESS PLANNED INDUSTRIAL OVERLAY
- B-4 - HEAVY BUSINESS
- B-4/PCD - HEAVY BUSINESS PLANNED COMMERCIAL OVERLAY
- M-1 - MARINA COMMERCIAL
- M-1/PCD - MARINA COMMERCIAL PLANNED COMMERCIAL OVERLAY
- CR - COMMERCIAL RECREATION
- INDUSTRIAL ZONING DISTRICTS**
- I-1 - GENERAL INDUSTRIAL
- I-1/PCD - GENERAL INDUSTRIAL PLANNED COMMERCIAL OVERLAY
- I-1/PCI - GENERAL INDUSTRIAL PLANNED INDUSTRIAL OVERLAY
- I-1X - SPECIAL INDUSTRIAL
- O-IP - OFFICE INDUSTRIAL PARK
- O-IP/PCD - OFFICE INDUSTRIAL PARK PLANNED COMMERCIAL DEVELOPMENT
- O-IP/PCI - OFFICE INDUSTRIAL PARK PLANNED INDUSTRIAL OVERLAY
- M-2 - MARINA INDUSTRIAL
- SPECIAL ZONING DISTRICTS**
- TO - Transit Oriented
- PR - PARKS AND RECREATION
- CF - COMMUNITY FACILITIES
- PU - PUBLIC UTILITIES
- T - TRANSPORTATION
- BP - BUSINESS PARKING
- LAC - LOCAL ACTIVITY CENTER
- W - WATER
- PLANNED DEVELOPMENT DISTRICTS**
- PD-1 - PLANNED DEVELOPMENT - INFILL
- RPUD - RESIDENTIAL PLANNED UNIT DEVELOPMENT
- RPUD-6 - RESIDENTIAL PLANNED UNIT DEVELOPMENT
- RM-45/PCI - MULTIPLE-FAMILY RESIDENCE PLANNED INDUSTRIAL DEVELOPMENT
- RM-45/HR - MULTIPLE-FAMILY RESIDENCE / HIGH-RISE OVERLAY
- City Boundary

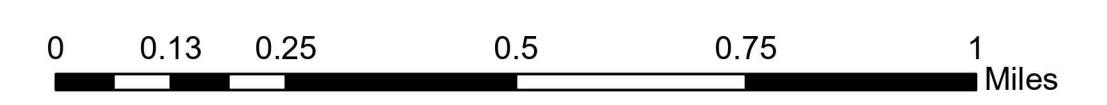
AMENDMENTS											
Ord. No.	Date	Ord. No.	Date	Ord. No.	Date	Ord. No.	Date	Ord. No.	Date	Ord. No.	Date
2010-25	4/13/2010	2014-46	7/22/2014	2020-01	10/7/2019	2024-04	10/24/2023				
2011-13	12/14/2010	2015-02	10/14/2014	2020-04	10/22/2019	2023-48	4/11/2023				
2011-14	12/14/2010	2015-14	1/13/2015	2020-16	1/14/2020						
2011-19	1/25/2011	2015-15	1/13/2015	2020-17	1/14/2020						
2011-62	7/26/2011	2015-50	5/12/2015	2020-26	1/28/2020						
2011-64	7/26/2011	2015-54	5/26/2015	2020-28	1/28/2020						
2011-72	9/27/2011	2015-55	5/26/2015	2020-45	3/10/2020						
2012-01	10/11/2011	2015-63	7/14/2015	2020-57	6/23/2020						
2012-05	10/25/2011	2015-64	7/14/2015	2020-58	6/23/2020						
2012-10	11/22/2011	2016-24	11/10/2015	2021-02	10/27/2020						
2012-33	3/27/2012	2016-38	1/26/2016	2021-38	2/23/2021						
2012-34	3/27/2012	2017-04	10/25/2016	2021-46	3/23/2021						
2012-48	6/26/2012	2017-35	4/25/2017	2021-51	4/27/2021						
2012-52	7/10/2012	2017-52	6/27/2017	2021-67	6/8/2021						
2012-53	7/10/2012	2017-59	7/25/2017	2021-76	7/13/2021						
2012-57	7/24/2012	2018-03	10/10/2017	2021-79	7/27/2021						
2013-08	11/13/2012	2018-04	10/10/2017	2021-87	9/28/2021						
2013-18	11/27/2012	2018-09	11/14/2017	2021-88	9/28/2021						
2013-47	3/28/2013	2018-20	1/9/2018	R:2021-297	9/14/2021						
2013-54	5/14/2013	2018-34	2/13/2018	R:2022-31	1/19/2021						
2013-53	5/14/2013	2018-40	2/27/2018	2022-03	11/9/2021						
2013-57	5/28/2013	2018-42	2/27/2018	2022-31	3/8/2022						
2013-71	7/9/2013	2018-52	4/10/2018	2022-35	3/22/2022						
2013-76	9/24/2013	2018-54	4/24/2018	2022-52	6/28/2022						
2014-3	10/22/2013	2019-64	5/28/2019	2022-67	9/27/2022						
2014-17	2/11/2014	2019-65	5/28/2019	2022-68	9/27/2022						
2014-26	3/25/2014	2019-72	6/25/2019	2023-15	12/13/2022						
2014-28	4/8/2014	2019-74	7/9/2019	2023-16	12/13/2022						
2014-34	5/13/2014	2019-81	7/23/2019	2023-17	12/13/2022						
2014-38	4/8/2014	2019-82	7/23/2019	2023-48	4/11/2023						
2014-42	6/10/2014	2019-107	9/24/2019	2024-03	10/24/2023						



Disclaimer:
 This product has been compiled from various source data. However, this product is for reference only and is not to be construed as a legal document or survey instrument. Any reliance on the information contained herein is at the user's own risk. The City of Pompano Beach assumes no responsibility for any use of the information contained herein or any loss resulting there from.

Created by:
 Engineering Division
 GIS Department | TCW

City of Pompano Beach Official Zoning Map Updated March 4, 2024



APPENDIX A: CONSOLIDATED USE TABLE

P = PERMITTED PRINCIPAL USE S = USE ALLOWED AS A SPECIAL EXCEPTION A = PERMITTED ACCESSORY USE
 T = TEMPORARY USE ALLOWED WITH A MAJOR TEMPORARY USE PERMIT τ = TEMPORARY USE ALLOWED WITH A MINOR TEMPORARY USE PERMIT
 √ = TEMPORARY USE ALLOWED WITHOUT TEMPORARY USE PERMIT I = INTERIM USE ALLOWED WITH AN INTERIM USE PERMIT BLANK CELL = PROHIBITED USE

USE CATEGORY (PRINCIPAL USES) AND/OR USE TYPE	RESIDENTIAL DISTRICTS												COMMERCIAL DISTRICTS				INDUSTRIAL DISTRICTS				SPECIAL DISTRICTS					PLANNED DEVELOPMENT DISTRICTS					USE-SPECIFIC STANDARDS				
	RS-1	RS-2	RS-3	RS-4	RS-L	RD-1	RM-7	RM-12	RM-20	RM-30	RM-45	MH-12	B-1	B-2	B-3	B-4	M-1	CR	I-1	I-X	OIP	M-2	TO	PR	CF	PJ	T	BP	RPUD	PCD		PD-TO	LAC	PD-I	
	PRINCIPAL USES																																		
INSTITUTIONAL USES																																			
Day Care Uses	Adult day care center							S	S	S	S			P	P	P	P			S	P	P	P	P	P	P	P	P	P	P	P	P	P	155.4206.A	
	Child care facility							S	S	S	S			P	P	P	P			S	P	P	P	P	P	P	P	P	P	P	P	P	P	155.4206.B	
Education Uses	College or university															P	P						P	P					P	P	P		155.4207.A		
	School, elementary						S	S	S	S	S					P	P						P	P				P	P	P	P	P	155.4207.B		
	School, high															P	P						P	P					P	P	P	P	155.4207.C		
	School, middle															P	P						P	P					P	P	P	P	155.4207.D		
	Specialty arts school													P	P	P	P		P	P	P	P		P	P				P	P	P	P	155.4207.F		
	Vocational or trade school															P	P			P	P	P		P	P					P	P	P		155.4207.E	
Government Uses	Correctional facility																														S				155.4208.A
	Courthouse facility															P	P					P	P							P	P	P	P	155.4208.B	
	Fire or EMS station						S	S	S	S	S		P	P	P	P	P		P	P	P	P	P	P		P		P	P	P	P	P	155.4208.C		
	Fire training facility															P				P	P	P								P	P			155.4208.D	
	Government administrative offices												P	P	P	P							P	P		P		P	P	P	P	P	155.4208.E		

APPENDIX A: CONSOLIDATED USE TABLE

P = PERMITTED PRINCIPAL USE S = USE ALLOWED AS A SPECIAL EXCEPTION A = PERMITTED ACCESSORY USE
 T = TEMPORARY USE ALLOWED WITH A MAJOR TEMPORARY USE PERMIT t = TEMPORARY USE ALLOWED WITH A MINOR TEMPORARY USE PERMIT
 √ = TEMPORARY USE ALLOWED WITHOUT TEMPORARY USE PERMIT I = INTERIM USE ALLOWED WITH AN INTERIM USE PERMIT BLANK CELL = PROHIBITED USE

USE CATEGORY (PRINCIPAL USES) AND/OR USE TYPE	RESIDENTIAL DISTRICTS												COMMERCIAL DISTRICTS				INDUSTRIAL DISTRICTS				SPECIAL DISTRICTS					PLANNED DEVELOPMENT DISTRICTS					USE-SPECIFIC STANDARDS							
	RS-1	RS-2	RS-3	RS-4	RS-L	RD-1	RM-7	RM-12	RM-20	RM-30	RM-45	MH-12	B-1	B-2	B-3	B-4	M-1	CR	I-1	I-X	OIP	M-2	TO	PR	CF	PJ	T	BP	RPUD	PCD		PD-TO	LAC	PD-H				
PRINCIPAL USES																																						
COMMERCIAL USES																																						
Business Support Service Uses	Business service center													P	P	P	P			P	P	P		P									P	P	P	P	P	155.4216.A
	Conference or training center															P	P			P	P	P		P		P							P	P	P	P	155.4216.B	
	Day labor service															P	P			P	P	P		P									P	P	P	P	155.4216.C	
	Employment agency														P	P	P			P	P	P		P		P							P	P	P	P	155.4216.D	
	Parcel services														P	P	P	P	P		P	P	P	P	P		P						P	P	P	P	155.4216.E	
	Telephone call center																P	P			P	P	P											P			P	155.4216.F
	Travel agency														P	P	P	P	P				P		P		P						P	P	P	P	P	155.4216.G
Commercial or Membership Recreation/ Entertainment Uses	Amusement arcade															P		P						P	P							P	P	P	P	155.4217.A		
	Arena, stadium, or amphitheater															S	P		S					S	S	P						P	P	P		155.4217.B		
	Auditorium or theater													P	P	P	P							P		P						P	P	P	P	155.4217.C		
	Bowling alley or skating rink														P	P	P		P					P	P	P						P	P	P	P	155.4217.D		
	Gaming establishment																		S														P	P	P		155.4217.E	
	Golf course	S	S	S	S	S	S	S	S	S	S	S							P						P	P	P					P	P			155.4217.F		

APPENDIX A: CONSOLIDATED USE TABLE

P = PERMITTED PRINCIPAL USE S = USE ALLOWED AS A SPECIAL EXCEPTION A = PERMITTED ACCESSORY USE
 T = TEMPORARY USE ALLOWED WITH A MAJOR TEMPORARY USE PERMIT t = TEMPORARY USE ALLOWED WITH A MINOR TEMPORARY USE PERMIT
 √ = TEMPORARY USE ALLOWED WITHOUT TEMPORARY USE PERMIT I = INTERIM USE ALLOWED WITH AN INTERIM USE PERMIT BLANK CELL = PROHIBITED USE

USE CATEGORY (PRINCIPAL USES) AND/OR USE TYPE	RESIDENTIAL DISTRICTS												COMMERCIAL DISTRICTS				INDUSTRIAL DISTRICTS				SPECIAL DISTRICTS					PLANNED DEVELOPMENT DISTRICTS					USE-SPECIFIC STANDARDS			
	RS-1	RS-2	RS-3	RS-4	RS-L	RD-1	RM-7	RM-12	RM-20	RM-30	RM-45	MH-12	B-1	B-2	B-3	B-4	M-1	CR	I-1	I-X	OIP	M-2	TO	PR	CF	PJ	T	BP	RPUD	PCD		PD-TO	LAC	PD-I
PRINCIPAL USES																																		
COMMERCIAL USES																																		
Retail Sales and Service Uses - Personal Services	Bank or financial institution								S	S	S		P	P	P	P							P				P	P	P	P	P	155.4221.C		
	Check cashing or payday loan store													S	S	P	P												P		P	155.4221.M		
	Crematory															P			P										P			155.4221.D		
	Dry cleaning or laundry drop-off establishment													P	P	P	P	P					P					P	P	P	P	155.4221.E		
	Fortune-telling establishment															P	P				P			P					P	P	P	155.4221.F		
	Funeral home or mortuary															P	P						P						P	P	P	155.4221.G		
	Laundromat														P	P	P	P					P						P	P	P	P	155.4221.H	
	Lawn care, pool, or pest control service																P			P	P			S						P	P	P	155.4221.I	
	Personal and household goods repair establishment														P	P	P	P						P					P	P	P	P	155.4221.J	
	Personal services establishment														P	P	P	P						P				P		P	P	P	155.4221.K	
Tattoo or body piercing establishment															P	P							P							P	P	P	155.4221.L	

APPENDIX A: CONSOLIDATED USE TABLE

P = PERMITTED PRINCIPAL USE S = USE ALLOWED AS A SPECIAL EXCEPTION A = PERMITTED ACCESSORY USE
 T = TEMPORARY USE ALLOWED WITH A MAJOR TEMPORARY USE PERMIT t = TEMPORARY USE ALLOWED WITH A MINOR TEMPORARY USE PERMIT
 √ = TEMPORARY USE ALLOWED WITHOUT TEMPORARY USE PERMIT I = INTERIM USE ALLOWED WITH AN INTERIM USE PERMIT BLANK CELL = PROHIBITED USE

USE CATEGORY (PRINCIPAL USES) AND/OR USE TYPE	RESIDENTIAL DISTRICTS											COMMERCIAL DISTRICTS				INDUSTRIAL DISTRICTS				SPECIAL DISTRICTS					PLANNED DEVELOPMENT DISTRICTS					USE-SPECIFIC STANDARDS			
	RS-1	RS-2	RS-3	RS-4	RS-L	RD-1	RM-7	RM-12	RM-20	RM-30	RM-45	MH-12	B-1	B-2	B-3	B-4	M-1	CR	I-1	I-X	OIP	M-2	TO	PR	CF	PJ	T	BP	RPUD		PCD	PD-TO	LAC
ACCESSORY USES AND STRUCTURES																																	
Dock	A	A	A	A	A	A	A	A	A	A	A	A	A	A	A	A	A	A	A	A	A	A	A	A	A	A	A	A	A	A	A	A	155.4303.H
Drive-through service															A	A	A			A	A	A								A		A	155.4303.I
Drop-in child care														A	A	A	A				A		A							A	A	A	155.4303.J
Electric vehicle (EV) level 1 or 2 charging station	A	A	A	A	A	A	A	A	A	A	A	A	A	A	A	A	A	A	A	A	A	A	A	A	A	A	A	A	A	A	A	A	155.4303.K
Electric vehicle (EV) level 3 charging station							A	A	A	A	A	A	A	A	A	A	A	A	A	A	A	A	A	A	A	A	A	A	A	A	A	A	155.4303.L
Family child care home	A	A	A	A	A	A	A	A	A	A	A											A						A		A	A	A	155.4303.M
Family child care home, large	A	A	A	A	A	A	A	A	A	A	A											A						A		A	A	A	155.4303.N
Fence or wall	A	A	A	A	A	A	A	A	A	A	A	A	A	A	A	A	A	A	A	A	A	A	A	A	A	A	A	A	A	A	A	A	155.4303.O
Garage or carport	A	A	A	A	A	A	A	A	A	A	A	A	A	A	A	A	A	A	A	A	A	A	A	A	A	A	A	A	A	A	A	A	155.4303.P
Greenhouse	A	A	A	A	A	A	A	A	A	A	A	A	A	A	A	A	A	A	A	A	A	A	A	A	A	A	A	A	A	A	A	A	155.4303.Q
Green roof	A	A	A	A	A	A	A	A	A	A	A	A	A	A	A	A	A	A	A	A	A	A	A	A	A	A	A	A	A	A	A	A	155.4303.R
Home based business	A	A	A	A	A	A	A	A	A	A	A	A	A	A		A						A						A		A	A	A	155.4303.S
Limited fuel/bottled gas distribution															A	A	A	A			A		A						A	A	A	A	155.4303.T
Outdoor display of merchandise														A	A	A	A						A							A	A	A	155.4303.U

