

FOR SUB-LEASE

902

CLINT MOORE ROAD
BOCA RATON, FL

CCPII - WEST BLDG.

1,100 RSF OFFICE FOR SUB LEASE



PROPERTY HIGHLIGHTS

- Located at the southwest corner of Congress and Clint Moore Rd. Easy access to I-95 along Yamato Rd. or Congress Interchange Lots of natural light - floor to ceiling windows
- Private restroom
- Lease expires on **6/30/2023**
- Kitchenette share with existing Tenant
- **1,100 RSF - \$2,200.00** per month, plus sales, tax and electric.

For additional information contact:

Charlie Exelbirt
954-309-7151
charlie@mattisadvisors.com

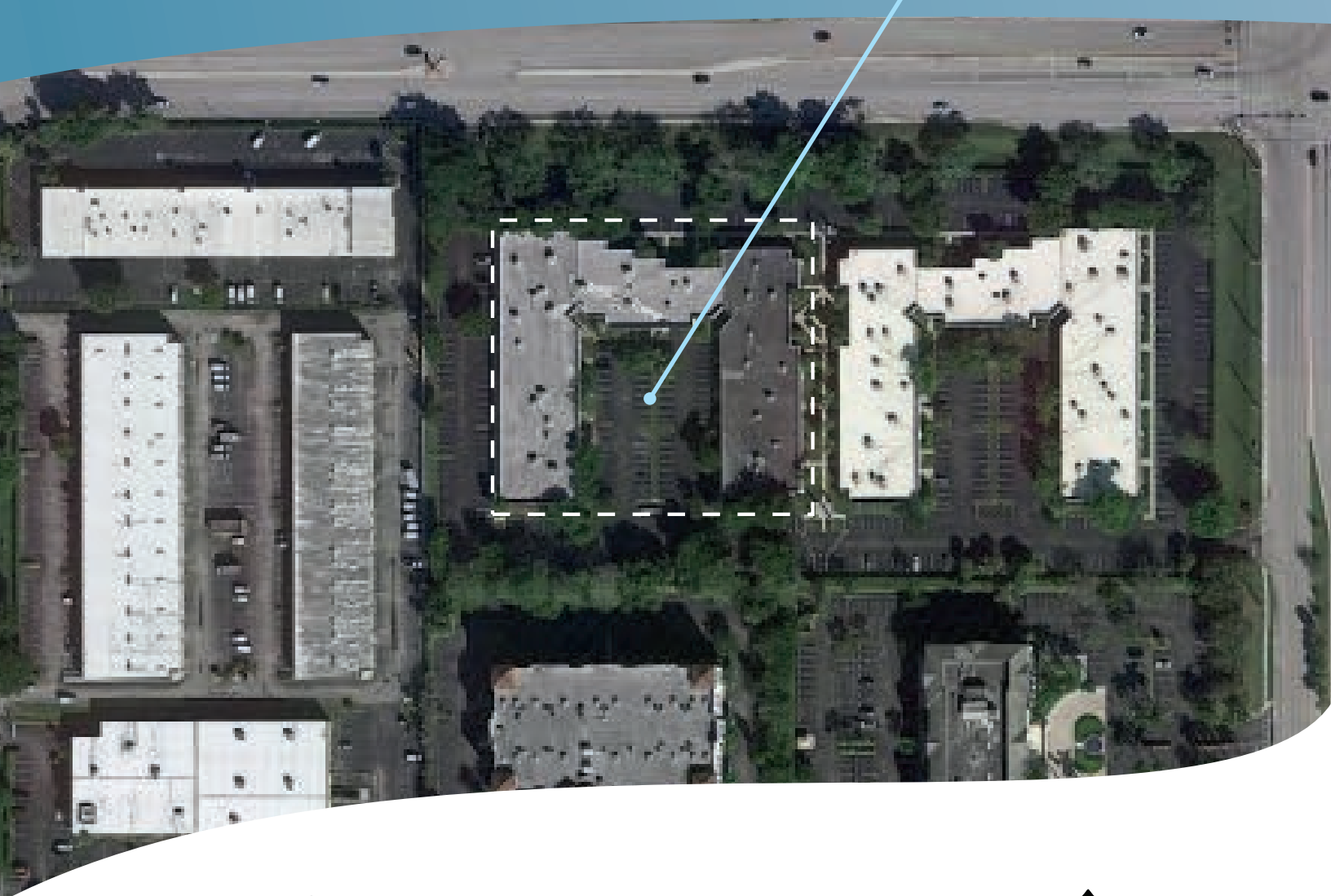
Anthony Olivo
561-699-5545
anthony@mattisadvisors.com



Any information herewith is obtained from sources we consider reliable. However, we are not responsible for misstatement of facts, errors, omissions, prior sale, and withdrawal from market modification of mortgage commitment, terms and conditions or change in price without prior notice. The information supplied herein is for informational purposes only and shall not constitute a warranty of assurance that said information is correct. Any person intending to rely upon the information supplied herein should verify said information independently.

MATTIS ADVISORS, INC.
Commercial Real Estate Brokers
1181 S. Rogers Circle, Suite 20
mattisadvisors.com

902 CLINT MOORE ROAD
BOCA RATON, FL



For additional information contact:

Charlie Exelbirt
954-309-7151
charlie@mattisadvisors.com

Anthony Olivo
561-699-5545
anthony@mattisadvisors.com

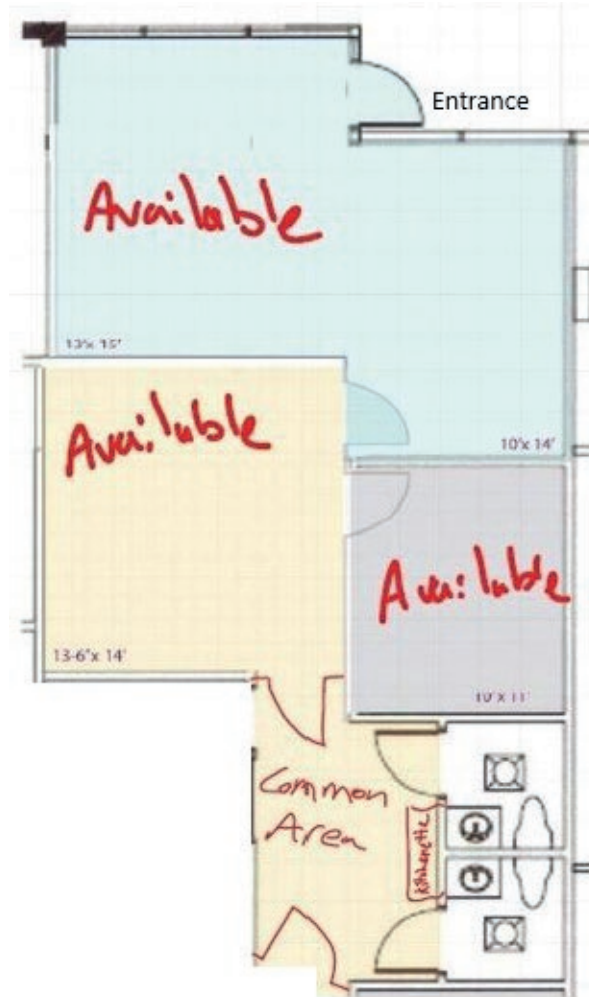


Any information herewith is obtained from sources we consider reliable. However, we are not responsible for misstatement of facts, errors, omissions, prior sale, and withdrawal from market modification of mortgage commitment, terms and conditions or change in price without prior notice. The information supplied herein is for informational purposes only and shall not constitute a warranty of assurance that said information is correct. Any person intending to rely upon the information supplied herein should verify said information independently.

MATTIS ADVISORS, INC.
Commercial Real Estate Brokers
1181 S. Rogers Circle, Suite 20
mattisadvisors.com



CONCEPTUAL FLOOR PLAN



For additional information contact:

Charlie Exelbirt
954-309-7151
charlie@mattisadvisors.com

Anthony Olivo
561-699-5545
anthony@mattisadvisors.com



Any information herewith is obtained from sources we consider reliable. However, we are not responsible for misstatement of facts, errors, omissions, prior sale, and withdrawal from market modification of mortgage commitment, terms and conditions or change in price without prior notice. The information supplied herein is for informational purposes only and shall not constitute a warranty of assurance that said information is correct. Any person intending to rely upon the information supplied herein should verify said information independently.

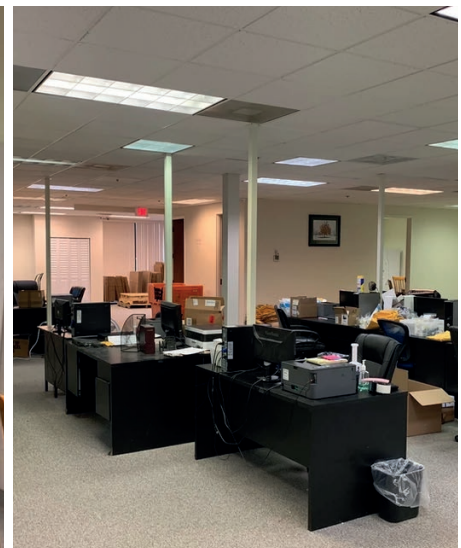
MATTIS ADVISORS, INC.
Commercial Real Estate Brokers
1181 S. Rogers Circle, Suite 20
mattisadvisors.com

**FOR SUB-LEASE
CCPII - WEST BLDG.**

**902 CLINT MOORE ROAD
BOCA RATON, FL**



PROPERTY PHOTOS



For additional information contact:

Charlie Exelbirt
954-309-7151
charlie@mattisadvisors.com

Anthony Olivo
561-699-5545
anthony@mattisadvisors.com



Any information herewith is obtained from sources we consider reliable. However, we are not responsible for misstatement of facts, errors, omissions, prior sale, and withdrawal from market modification of mortgage commitment, terms and conditions or change in price without prior notice. The information supplied herein is for informational purposes only and shall not constitute a warranty of assurance that said information is correct. Any person intending to rely upon the information supplied herein should verify said information independently.

MATTIS ADVISORS, INC.
Commercial Real Estate Brokers
1181 S. Rogers Circle, Suite 20
mattisadvisors.com